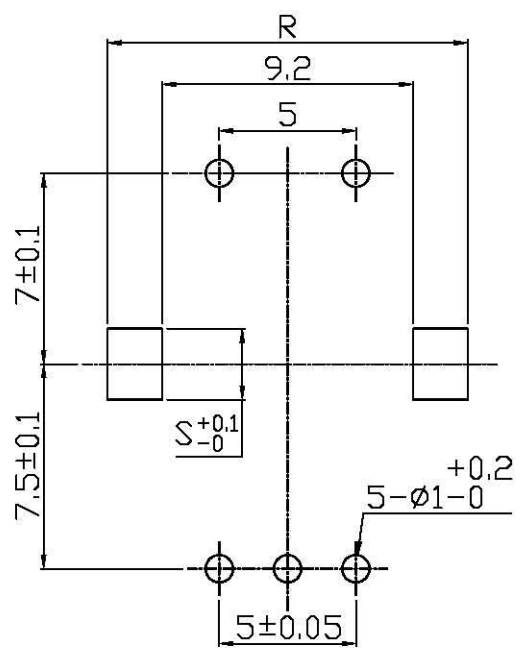
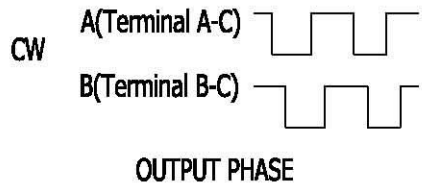
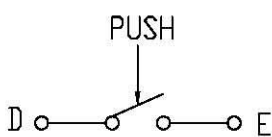
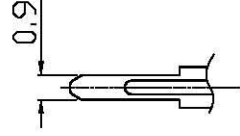
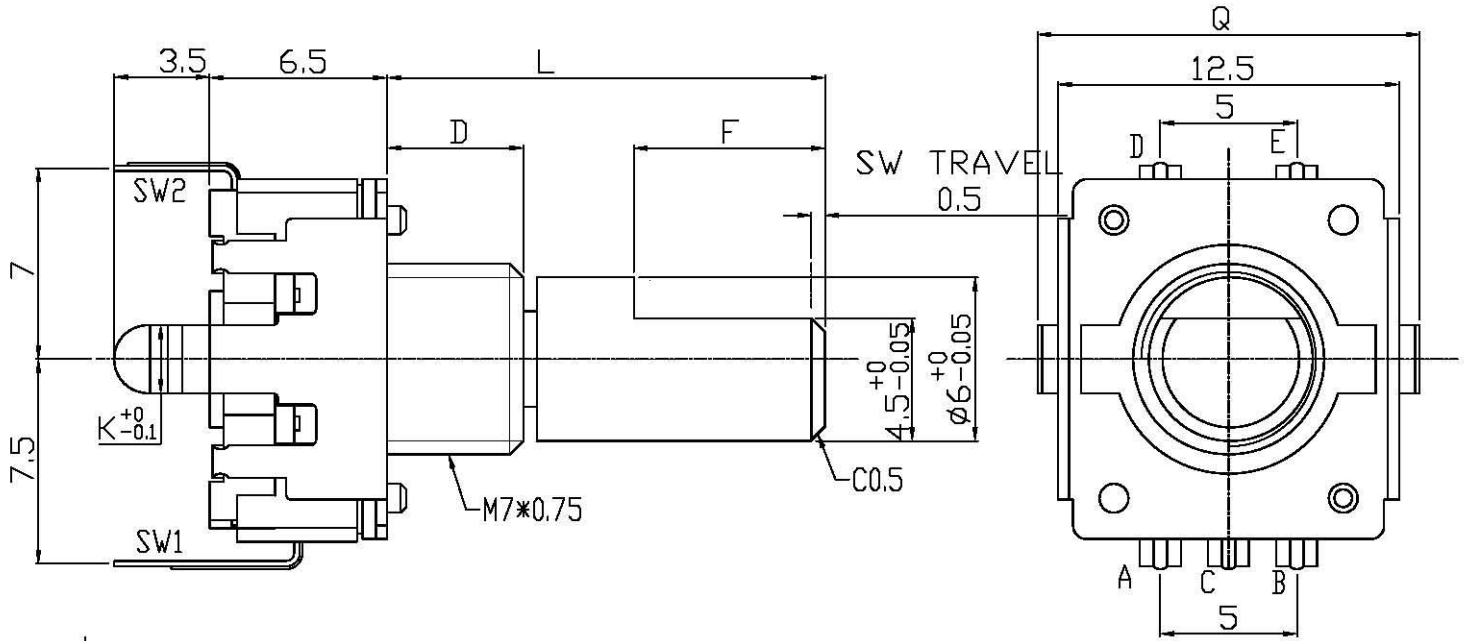


MODEL RE1203 **X** **W** 1-H01

BASIC DIMENSIONS	L ≤ 10	10 < L	100 ≤ L	ANGLE	UNIT
TOL.	±0.3	±0.5	±0.8	±5°	mm

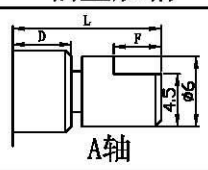


<b>X</b>	B	C
D	5	7

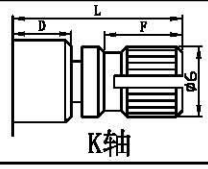
<b>W</b>	B	C
K	2.5	2
Q	14	14
R	13.2	13.2
S	2.6	2.1

P.C.B. MOUNTING DETAIL

轴型规格



	D=5								D=7				
	L	11	11	11	11.5	12	13.5	14	15	17	20	20	30
F	4	4.5	5	5	5	5	7	6	7	7	6.5	10	12



	D=5				D=7					
	L	11.5	12.5	15	15.3	20	25	28	30	24.5
F	5	5	7	7	7	7	14	12	12	12